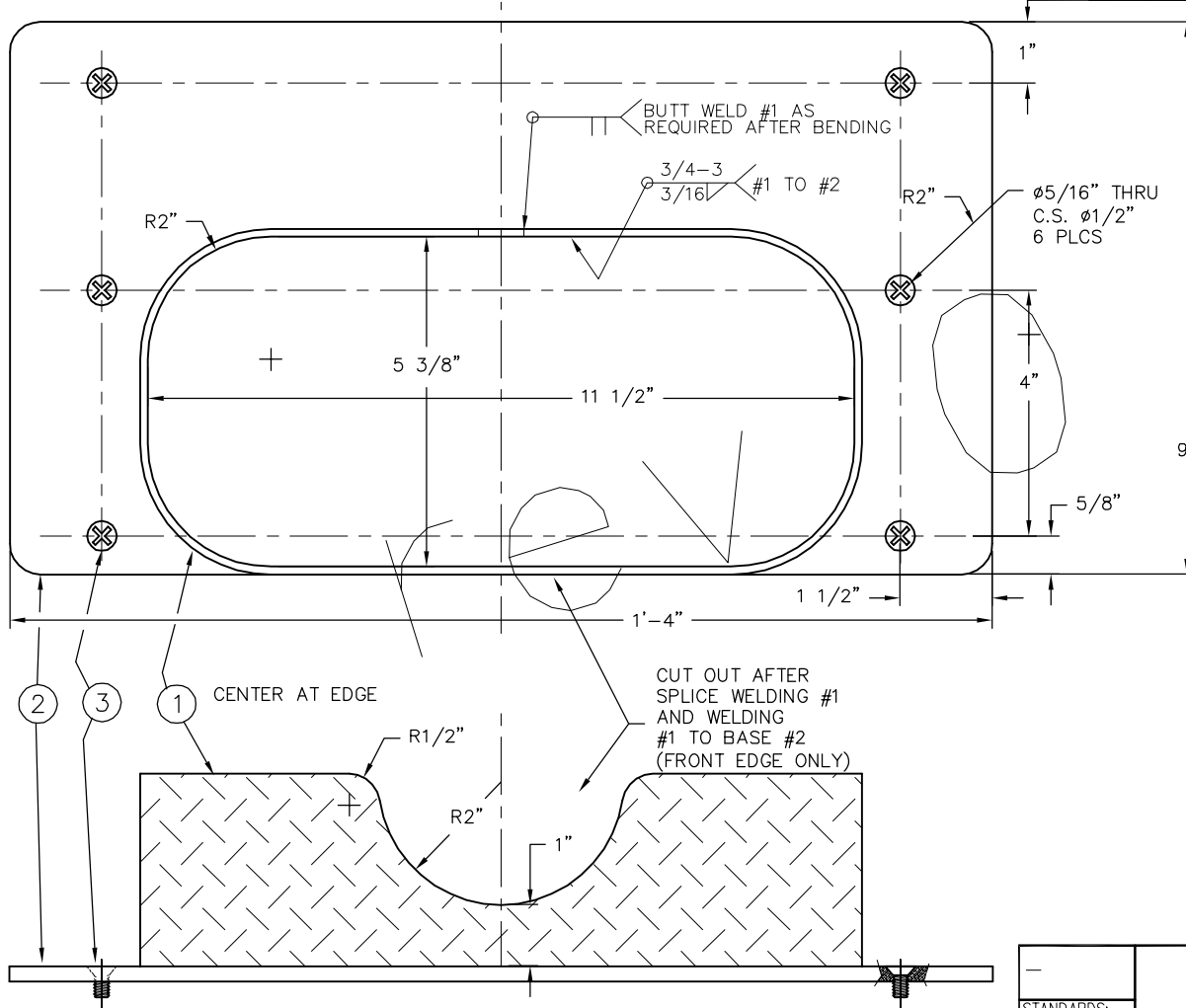


rev dwg log
tote-along bracket
scroll to last page
for current revision

BILL OF MATERIALS

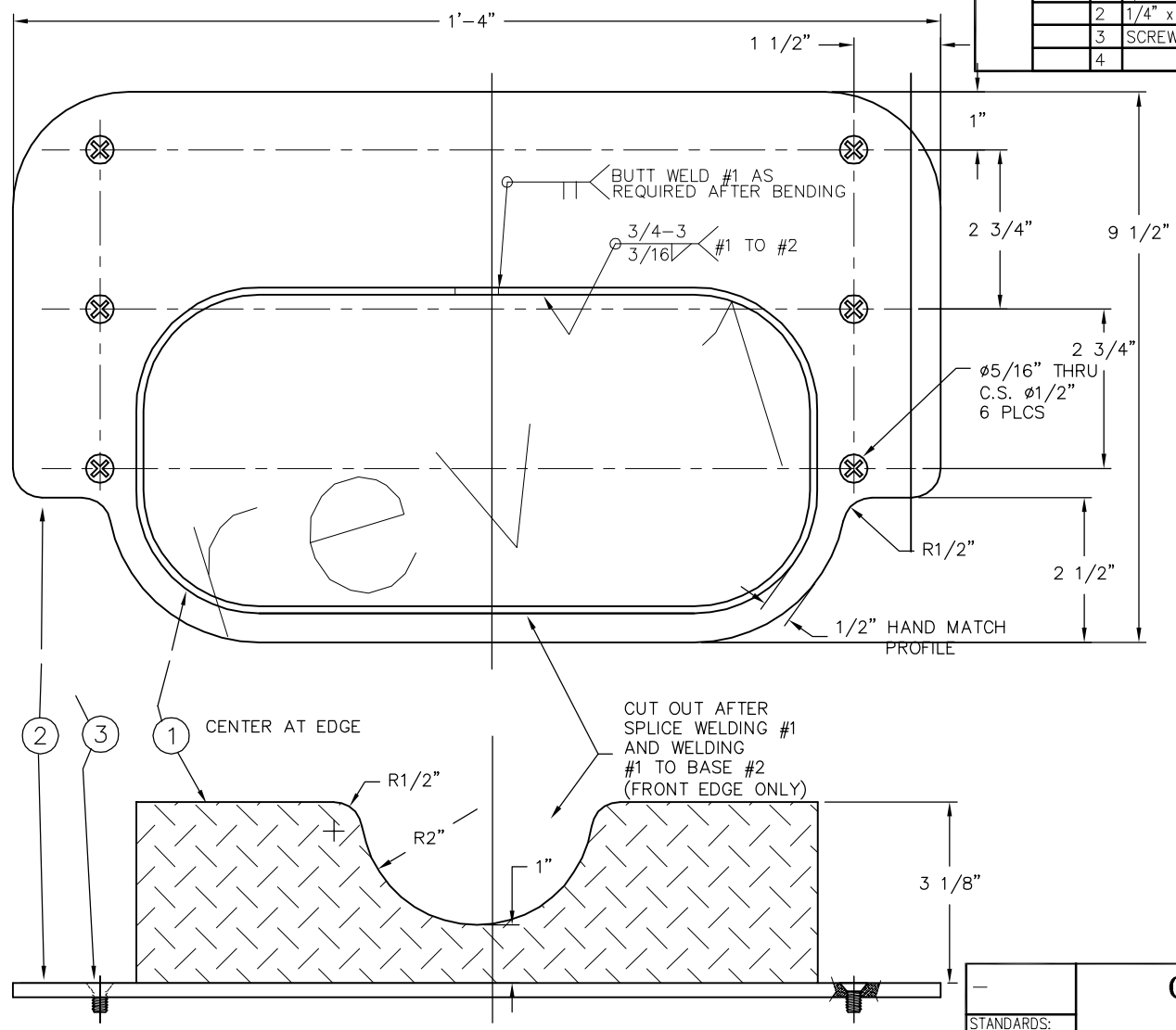
| FIELD ASSEMBLY | MARK | | DESCRIPTION | TOTAL QTY. | SPECIFICATION | WEIGHT (TOTALS) | PURCHASING NUMBER |
|----------------|----------------|-------|--------------------------------------------------|------------|---------------|-----------------|-------------------|
| | SHIPPING PIECE | PIECE | | | | | |
| 17-A | 1 | 1 | 1/8" x 3" x 2'-4 1/2" DIAMOND PLATE CUT AS SHOWN | 1 | ALUMINUM | - | |
| | 2 | 1 | 1/4" x 16" x 9" PLATE | 1 | ALUMINUM | - | |
| | 3 | 6 | SCREW 1/4-20 UNC x 3/4" PHILLIPS FLAT HEAD | 6 | SST | - | |
| | 4 | | | | | | |



| | | | | | | | | |
|-----------------------------------------------------------------------------------------------------------------------------------------------------------------------------------------------------------------------------------------------------------------------------------------------------------------------------------------------------------------------------------------------------------------------------------------------------------|-----|------------------------------------------------------------------------------------|--|--------------------------------------------------------------------------------------|---------------|--------------|----|--------------|
| STANDARDS: | | <p align="center">OUR ELKHORN</p> <p align="center">SAN LUIS OBISPO, CA</p> | | CHECKED BY/DATE | DRAWN BY/DATE | NO. REVISION | BY | DATE |
| B | /LD | | | II | WAB | 04/27/07 | | |
| <small>THIS DRAWING HAS BEEN PREPARED FOR AND IS THE PROPERTY OF ME. DO NOT USE TO BUILD OR CAUSE TO CONSTRUCT ANY ITEM. AND DEEMED TO BE COMMERCIALY INSENSITIVE. IT IS TO BE USED ONLY IN CONNECTION WITH PERFORMANCE OF WORK BY ME. AND IS TO BE SAFEGUARDED AGAINST BOTH DELIBERATE AND INADVERTENT DISCLOSURE TO ANY IDIOT OR MORON. REPRODUCTION IN WHOLE OR IN PART FOR ANY PURPOSE MAY CAUSE INJURY OR DEATH, AND IS EXPRESSLY FORBIDDEN.</small> | | | | DESCRIPTION: POE BUCKET HOLDER TOTE ALONG BRACKET PRELIMINARY | | SCALE: 1/2=1 | | REV: PU 0 |

BILL OF MATERIALS

| FIELD ASSEMBLY | MARK SHIPPING | PIECE | DESCRIPTION | TOTAL QTY. | SPECIFICATION | WEIGHT (TOTALS) | PURCHASING NUMBER |
|----------------|---------------|-------|--------------------------------------------------|------------|---------------|-----------------|-------------------|
| 17-A | | 1 | 1/8" x 3" x 2'-4 1/2" DIAMOND PLATE CUT AS SHOWN | 1 | ALUMINUM | - | |
| | | 2 | 1/4" x 16" x 9" PLATE | 1 | ALUMINUM | - | |
| | | 3 | SCREW 1/4-20 UNC x 3/4" PHILLIPS FLAT HEAD | 6 | SST | - | |
| | | 4 | | | | | |



| | | | | | | | |
|--------------------------------------------------------------------------------------------------------------------------------------------------------------------------------------------------------------------------------------------------------------------------------------------------------------------------|--|---------------------|--|---------------------|------------------|--------------|------------------------------------------|
| STANDARDS: | | OUR ELKHORN | | CHECKED BY/DATE | DESIGNED BY/DATE | NO. REVISION | BY DATE |
| B /LD | | SAN LUIS OBISPO, CA | | WAD | 04/27/07 | 1 | RESHAPE #2 TO UTILIZE EXISTING SCRAP MAT |
| THIS DRAWING HAS BEEN PREPARED FOR AND IS THE PROPERTY OF ME. DO NOT USE TO BUILD OR CAUSE TO CONSTRUCT ANY ITEM. | | | | DESCRIPTION: | | | |
| AND DEEMED TO BE COMMERCIALY INSENSITIVE. IT IS TO BE USED ONLY IN CONNECTION WITH PERFORMANCE OF WORK BY ME. AND IS TO BE SAFEGUARDED AGAINST BOTH DELIBERATE AND INADVERTENT DISCLOSURE TO ANY IDIOT OR MORON. REPRODUCTION IN WHOLE OR IN PART FOR ANY PURPOSE MAY CAUSE INJURY OR DEATH, AND IS EXPRESSLY FORBIDDEN. | | | | POO BUCKET HOLDER | | | |
| | | | | TOTE ALONG BRACKET | | | |
| | | | | PRELIMINARY | | | |
| | | | | SCALE: 1/2=1 | | | |
| | | | | REV. 1 | | | |
| | | | | DRAWING NUMBER PU 1 | | | |

OBVIOUSLY THIS MOUNT IS CAMPER & TANK SPECIFIC. I STARTED WITH PLATE SETTING ON BUMPER, DETERMIN WHERE TANK WOULD BE LEAST OBRUSIVE. MARK PLATE WHERE TANK SETS, BEND PLATE TO WRAP LOWER SEC OF TANK. **ALL DIMENSIONS ARE REFERENCE ONLY**

BILL OF MATERIALS

| FIELD ASSEMBLY | MARK SHIPPING PIECE | PIECE | DESCRIPTION | TOTAL QTY. | SPECIFICATION | WEIGHT (TOTALS) | PURCHASING NUMBER |
|----------------|---------------------|-------|----------------------------------------------------------------------------|------------|---------------|-----------------|-------------------|
| 17-A | | 1 | 1/8" x 3" x 2'-4 1/2" DIAMOND PLATE CUT AS SHOWN | 1 | ALUMINUM | - | |
| | | 2 | 1/4" x 16" x 9" PLATE | 1 | ALUMINUM | - | |
| | | 3 | SCREW 1/4-20 UNC x 3/4" PHILLIPS FLAT HEAD WITH FLAT WASHERS & NYLOCK NUTS | 7 | SSST | - | |
| | | 4 | FOLDING ANCHOR, SPRING LOADED NATIONAL #N237-040 OR EQUIV. | 1 | ZINC | - | |

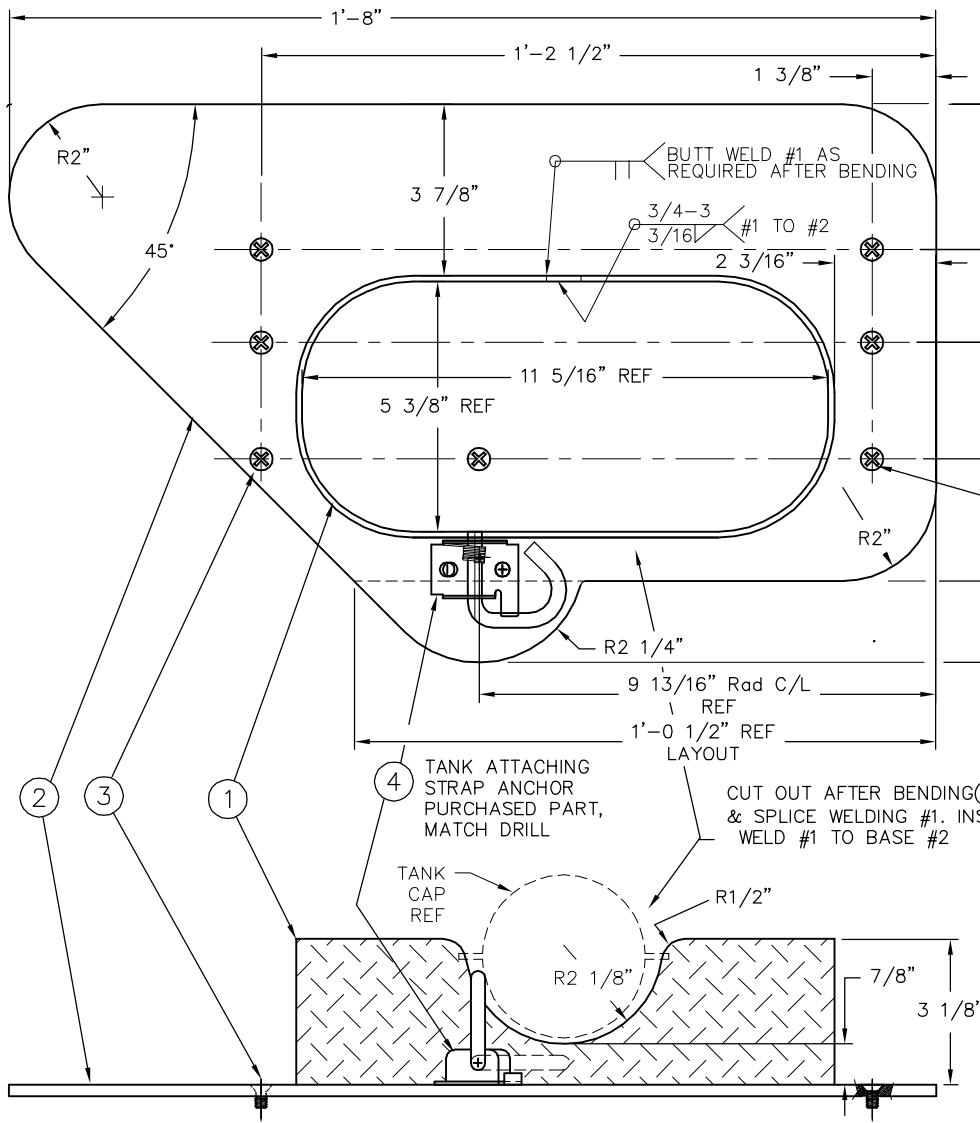


PLATE IS SCRAP, (ORIG.. DRAWN AS RECTANGLE) WAS GOING TO RECUT BUT COULDN'T SEE A REASON. ENDED UP A GOOD THING, THE FRONT RADIUS STICKOUT OFFERS SOME PROTECTION FOR TANK SEWER CONN., ALSO IS WHERE A SPRING LOADED ANCHOR PLATE #4 WILL MOUNT. WHEN ANCHOR IS OPEN AND STRAP ATTACHED ITS UNDER THE EAR OF SEWER CAP SO CANT BE OPENED WHEN TANK IS STRAPPED.

PLATE MOUNT HOLES, LOCATE AS NEEDED (1 SET ON TOP OF HIGH BUMPER RUBBER RIBS) I DRILLED & TAPPED BUMPER BUT STILL USING WASHERS/NYLOCK NUTS IF YOUR MOUNTING WONT LET YOU REACH BOLTS AND ARE RELYING ON TAPPING BUMPER FOR RETAINING TANK USE MORE BOLTS

NOT SHOWN IS T HANDLE TIE PLATE & RUBBER BUMPERS MOUNTED TO CAMPER, AT TANK HANDLE HEIGHT. RATCHET STRAP (WITH STEEL HOOK REMOVED) WILL ATTACH TO T-TIE, WARP AROUND TANK HANDLE THEN DOWN FRONT OF TANK TO SPRING ANCHOR ON PLATE. I MAY (WILL) END UP ADDING MOUNTS ON EITHER SIDE OF TANK TO STRAP ACROSS, ALSO BOUT 3/4" UP TANK HEIGHT IS ALUMIN. CAMPER FRAME MEMBER, WHICH MY TOP MOUNT IS IN WOOD ONLY-

DONT THINK WE'LL USE TANK MUCH, BUT BEEN A FEW TIMES TANKS WERE FULL AND HAD TO SEARCH FOR DUMP. SOME PLACES DONT HAVE DUMPS/TOILETS ETC. REALIZED AT SOME CAMP LOCATIONS WE'D HAVE TO HAUL OFF FULL TANK. AS MOUNTED TANK IS UGLY, CANT FULLY OPEN DOOR AND THERES ROOM ON THE ROOF WHEN EMPTY/CAMPING. THIS BRACKET IS ONLY GOING TO BE USED WHEN TANK IS FULL AND WE NEED TO TRAVEL TO DUMP IT. -TANK IS 15GAL, THOUGH I CAN LIFT 10, I WOULDN'T EVEN WANT TO DRAG 15 FAR. GOT 15 TO INSURE DIDN'T OVERFILL, HAS LARGER WHEELS, CAN TOW W/SCOOTER (IF I CAN FIGURE A SIMPLE HITCH) OR DRAG IF DUMP IS CLOSE.

| | |
|-----|----------------------------------------------------------------------------------------------------|
| 2 | REDRAWN TO REFLECT UNCLUT SCRAP MAT #2 BY DATE |
| 1 | REV 1 NOT COMPLETED, USED EXIST. SCRAP #2 AS IS. ADD #4 USING EXIST. HOLES. ADD HOLE QTY #3 WAS 6. |
| 1 | RESHAPE #2 TO UTILIZE EXISTING SCRAP MAT BY DATE |
| NO. | REVISION BY DATE |

| | | | | |
|--------------------------------------------------------------------------------------------------------------------------------------------------------------------------------------------------------------------------------------------------------------------------------------------------------------------------------------------------------------------------------------------------------------------------------------------|--|-----------------|---------------|-----------|
| OUR ELKHORN SAN LUIS OBISPO, CA | | CHECKED BY DATE | DRAWN BY DATE | DATE |
| STANDARDS: | | | | |
| THIS DRAWING HAS BEEN PREPARED FOR AND IS THE PROPERTY OF ME. DO NOT USE TO BUILD OR CAUSE TO CONSTRUCT ANY ITEM. AND DEEMED TO BE COMMERCIALY INSENSITIVE. IT IS TO BE USED ONLY IN CONNECTION WITH PERFORMANCE OF WORK BY ME, AND IS TO BE SAFEGUARDED AGAINST BOTH DELIBERATE AND INADVERTENT DISCLOSURE TO ANY IDIOT OR MORON. REPRODUCTION IN WHOLE OR IN PART FOR ANY PURPOSE MAY CAUSE INJURY OR DEATH, AND IS EXPRESSLY FORBIDDEN. | | | | |
| POO BUCKET HOLDER TOTE ALONG BRACKET PRELIMINARY | | | | |
| SCALE: 3/8"=1 | | | | REV. PU 2 |